

SPECIFICATIONS

South S750-2013 technical specification	
GNSS	
Channels	220
GPS	L1 C/A with carrier phase smoothing
GLONASS	L1 C/A
GALILEO	E1
QZSS	L1 C/A,L1 SAIF
SBAS	L1 C/A
BDS	B1
Data Output	NMEA-0183, TSIP
I/O Protocol	RTCM2.3(1/3/9),RTCM3.1
Update rate	1Hz
Reacquisition	<1s
Cold start	<30s
System	
Operating system	Windows Mobile 6.5
CPU	1GHz
Memory	512MB RAM , 16GB NAND Flash
Extendable	32G
Accuracy	
Single point positioning	2.5m
SBAS	0.50m Horizontal 0.85m Vertical
DGNSS	0.25m+1ppm Horizontal 0.50m+1ppm Vertical
Integration	Speaker&Microphone integrated
Camera	5.0 Megapixel
Display	Resolution 640x480, 3.7 inch touch screen
Sensors	Electronic compass, Barometer, G-Sensor, Thermometer
Communication	
Data interface	Mini USB2.0, support OTG and charging function
Wireless	GSM/GPRS
3G	WCDMA
Bluetooth	Bluetooth V2.0 Class2, Support EDR
Wireless LAN	802.11b/g
Electrical	
Battery type	7200mAh, Li-ion battery built in, 3.7v
Battery life	Typically 10 hrs or more
Environmental	
Operating temperature	-20℃~+60℃
Storage temperature	-30℃~+70℃
Shockproof	Withstand drops from 1.5m to concrete
Waterproof/Dustproof	Tested to IP67 standard
Physical	
Dimensions(mm)	225(L)x95(W)x35(H)
weight	0.66kg

SOUTH
Target your success



S750

High-Precision Handheld GIS Data Collector

SOUTH
Target your success

SOUTH SURVEYING & MAPPING INSTRUMENT CO.,LTD.

Add: 2/F, Surveying Building (He Tian Building),NO.26, Ke Yun Road, Guangzhou 510665, China
Tel: +86-20-23380891/85524990/23380888 Fax: +86-20-85524889/85529089/23380800
E-mail: mail@southsurvey.com export@southsurvey.com impexp@southsurvey.com gnss@southsurvey.com
http://www.southinstrument.com http://www.southsurvey.com

KEY FEATURES

Professional GPS Module

High quality surveying-typed GPS antenna and mainboard, 220 channels, GPS, GLONASS and BDS tracking, ensure faster satellites tracking and more reliable positioning result, which portable navigation handheld GPS could be never compared with. Excellent performance is guaranteed even in bad conditions.

Easy access to CORS

South S750 receiver is equipped with a professional industrial module, which fully compatible with GPRS/GSM network signal, helps the unit to access the CORS network seamlessly for RTD(Real Time Differential) corrections.

Plug and play external antenna options

Full constellation signal tracking performance ensures you can get high accuracy on this receiver no matter where you are. And the plug and play external antenna makes points be more accurate.

Extensive static survey functionality

When equipped with optional external antenna, S750 can work with other gps receivers in static mode for geodetic control survey.



Rugged fieldwork package

The integrated package consisting of GPS antenna, processing mainboard and data collector, make it a rugged handheld unit at standard industrial level, yet economic and cable free.

Outdoor tools

Based on the most advanced and compatible professional Windows Mobile 6.5 operating system, featured with sensors of Electronic compass, Barometer, G-Sensor and Thermometer, yet fully integrated with all the features you need in the field.

Battery package

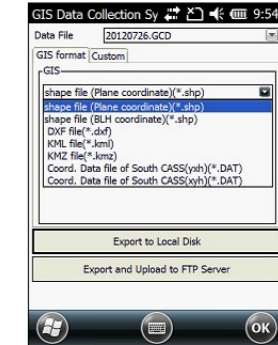
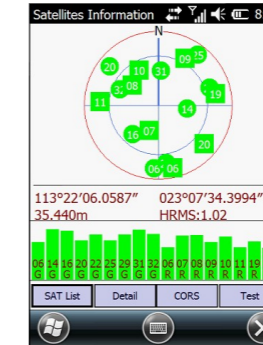
Equipped with 2 big capacity batteries (7200mAh each battery), plus the low-power consumption power board, which ensures the continuous whole-day field work.



SOFTWARE

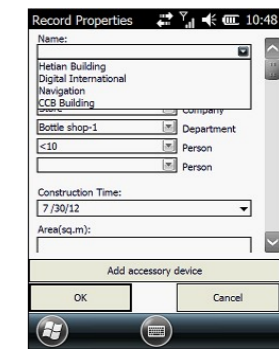
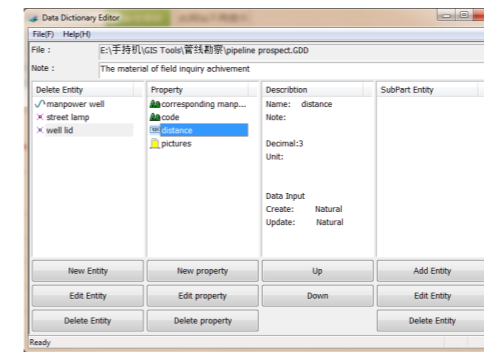
GISStar (Default)

Completely new professional and user-friendly onboard software, GISStar, is an ideal solution for GIS data collection, yet very easy to use and convenient for data communication. Equipped with sharply enhanced software GISStar, the device can meet diverse needs of surveyors, contractors, engineers and mapping professionals. Multiple data format exporting would help this unit become a most compatibility of device.



Data dictionary editor

Besides data acquisition or stake-out in traditional survey, this smart unit allows the users to add or edit entity and property in the **Data Dictionary** option, which enables it a real GIS handheld with full capacities.



WIDE APPLICATIONS

This handy unit can help you not just basic survey but also a variety of applications, eg. Forestry investigation, power supply facility maintenance and inspection, agriculture management, assets management, underground pipe and cable detection, land resources investigation, etc. Specific software or hardware solutions tailored to different professional needs can be effectively customized and combined to this mobile mapping genius.

