

SPECIFICATIONS

Satellite Signals Tracked Simultaneously	
Signal tracking	336 channels, 555 channels (optional)
	BDS B1,B2,B3
	GPS L1C/A,L1C,L2C,L2E,L5
	GLONASS L1C/A,L1P,L2C/A,L2P,L3
	SBAS L1C/A,L5 (just for the satellites supporting L5)
	Galileo GIOVE-A,GIOVE-B,E1,E5A,E5B
	QZSS,WAAS,MSAS,EGNOS,GAGAN
	L-band
GNSS features	Positioning output rate:1Hz~50Hz
	Initialization time:<10s
	Initialization reliability:>99.99%
Positioning precision	
Code differential GNSS positioning	Horizontal: $\pm 0.25\text{m} + 1\text{ppm}$ Vertical: $\pm 0.50\text{m} + 1\text{ppm}$ SBAS positioning accuracy: typically <5m 3DRMS
Static GNSS surveying	Horizontal: $\pm 3\text{mm} + 0.1\text{ppm}$ Vertical: $\pm 3.5\text{mm} + 0.4\text{ppm}$
Fast static	Horizontal: $\pm 3\text{mm} + 0.3\text{ppm}$ Vertical: $\pm 5\text{mm} + 0.5\text{ppm}$
Real-time kinematic surveying	Horizontal: $\pm 8\text{mm} + 1\text{ppm}$ Vertical: $\pm 15\text{mm} + 1\text{ppm}$
SLink	Horizontal: 3-10cm (5-30min) Vertical: 8-20cm (5-30min)
RTK initialization time	2~8s
User interaction	
Operating system	Linux
Buttons	Two buttons operation
Indicators	Five indicate lights
Web UI	Freely to configure and monitor the receiver by accessing to the web server via Wi-Fi and USB
Voice guide	iVoice intelligent voice technology provides status and voice guide
	Supporting Chinese, English, Korean, Russian, Portuguese, Spanish, Turkish and user define
Secondary development	Providing secondary development package
Hardware performance	
Dimension	135mm(Diameter)x125mm(Height)
Weight	1.39kg (with two batteries)
Material	Magnesium aluminum alloy shell
Operating	-40°C~+65°C
Storage	-40°C~+80°C
Humidity	95% Non-condensing
Waterproof/Dustproof	IP67 standard, protected from long time immersion to depth of 1m IP67 standard, fully protected against blowing dust
Shock and vibration	Withstand 2 meters pole drop onto the cement ground naturally
Power Supply	9-25V DC, overvoltage protection
Battery	Rechargeable, removable Lithium-ion battery, 7.4V 3400mAh/per; standard four batteries power package(optional)
Battery solution	Supporting one or two batteries installed; supporting power pole connection
Battery life	Single battery: >8h (static mode). And two installed hot swappable batteries works for more than 16 hours.
Communications	
I/O port	5PIN LEMO external power port + RS232, 7PIN external USB(OTG)+Ethernet 1 radio antenna interface, SIM card slot
Wireless modem	Built-in radio, 1W/2W/3W switchable, typically work range can be 8KM Radio and internet repeater switchable
Frequency Range	410-470MHz
Communication Protocol	TrimTalk450s, TrimMark3, PCC EOT, SOUTH
Cellular Mobile Network	WCDMA/CDMA2000/TDD-LTE/FDD-LTE 4G network modem, downward compatible with 3G GPRS/EDGE
Double Module Bluetooth	BLEBluetooth 4.0 standard, support for android, ios cellphone connection
	Bluetooth 2.1 + EDR standard
NFC Communication	Realizing close range (shorter than 10cm) automatic pair between receiver and controller (controller equipped NFC wireless communication module needed)
External Devices	Optional external GPRS/EDGE dual-mode communication module, switchable; allow to connect external WLAN card
WIFI	
Standard	802.11 b/g standard
WIFI Hotspot	The WIFI hotspot allows any mobile terminal to connect and access to the internal webserver for the control and monitor receiver
WIFI data link	To work as the datalink that receiver is able to broadcast and receive differential data via WIFI
Data storage/ Transmission	
Data Storage	8GB SSD internal storage Support external USB storage and automatical cycle storage Changeable record interval, up to 50Hz raw data collection
Data Transmission	USB data transmission, supporting FTP/HTTP data download
Data Format	Differential data format: CMR+, CMRx, RTCM 2.1, RTCM 2.3, RTCM 3.0, RTCM 3.1, RTCM 3.2 GPS output data format: NMEA 0183, PJK plane coordinates, Binary code, Trimble GSOF Network model support: VRS, FKP, MAC, fully support NTRIP protocol
Inertial sensing system	
Tilt survey	Built-in tilt compensator, correcting coordinates automatically according to the tilt direction and angle of the centering rod
Electronic bubble	Controller software display electronic bubble, checking leveling status of the centering rod real time
Thermometer	Built-in thermometer sensors, adopting intelligent temperature control technology which can monitor and adjust the temperature of receiver in real time

Behind every significant epoch-making change in human society, always accompanied by the birth of an important technology.

Computer and electronics make surveying and mapping industry achieve a span from the analog age to the digital age.

And the development of Internet technology further opens the prelude of surveying and mapping information age.

In the form of the ubiquitous, internet is penetrating and fusion in all corners of the surveying technology, and setting off an unprecedented reconstruction and transformation.

In the dawn of a new era, south is walking in front of it to craft Galaxy 1plus which opening a '+' era of high-precision positioning applications.

KEY FEATURES

Intelligent platform

Linux OS

New generation of embedded Linux operating system platform improves RTK performance and work efficiency. Its operating efficiency is higher; a unique core processing mechanism which can respond to more than one command at one time; it starts faster and more responsive in real time. While the stability of system is much higher, it can be adapt to the job of longer uninterrupted power.



Web UI management platform

Embedded Web UI management platform supports WIFI and USB mode connection. Users can monitor the receiver status and configure it via the internal Web UI management platform.



Wireless data communications

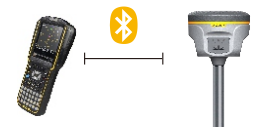
Wi-Fi

New Wi-Fi module, not only can be used as data link to access to internet, but also can be as a hotspot which can be accessed by any other smart devices to configure the receiver.



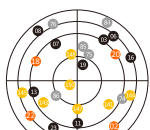
Bluetooth

Equipped with dual-mode Bluetooth v4.0 standard which is able to connect the other smart devices and compatible with Bluetooth v2.1 standard. It not only enlarges the work range but also makes the data communication become more stable.

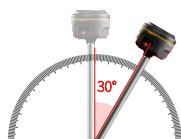


NFC

A light touch can be successfully paired which makes the connection become faster and more convenient.



● GPS ● GLONASS ● BDS ● GALILEO



Tilt survey



Electronic bubble



Magnesium alloy shell



All-round protection design