

DL SERIES

Digital Level



Features

- Advanced Accuracy
- Trigger Key Function
- 3.0 Inch Colorful Touch Screen for DL-2003A
- Magnetical-damped Compensator
- Multiple Data Transform
- Bluetooth Remote Control for DL-2003A



DL-2003A

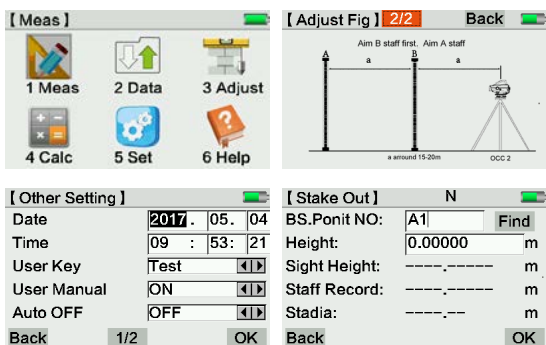


DL-2007

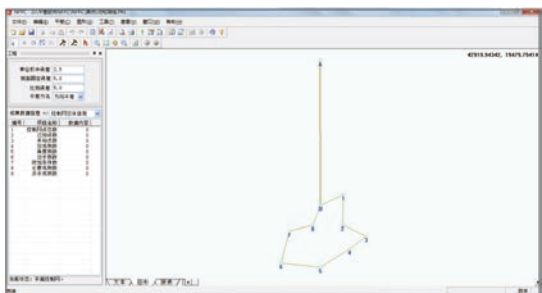


DL-202

Software



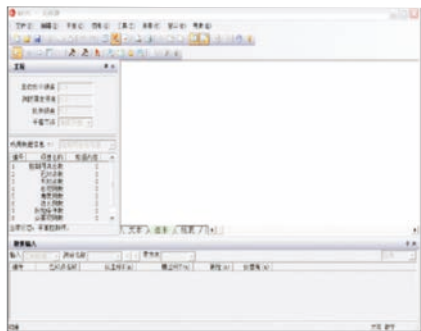
Intelligent On-board System for DL-2003A



Powerful Post-processing Software

It contains adjustment routines for dynamic adjustment of horizontal & vertical control network and angle & direction adjustment.

Easily zoom in or out to see the overall data in graphic.



Seamless Transfer with Various Data Formats

Station	SD_Length	AccSignDist.Length	SD_Off	d	Height
1	35.2335	35.2335	0.1135	0.1135	
2	54.862	89.9155	-0.262	-0.1485	
3	48.915	138.8305	-0.937	-1.0805	
4	50.588	173.9195	-2.438	-1.5425	
5	37.1895	211.1085	-0.915	-2.2265	
6	55.139	266.2475	0.731	-1.0445	
1	55.1430	55.1430	-0.7300	-0.7300	
2	37.1875	92.3405	0.5835	-0.1465	
3	35.1825	127.4435	0.4855	0.3390	
4	48.9055	176.3485	1.8975	1.4365	
5	54.8470	230.9955	0.2240	1.6605	
6	35.2170	266.2125	-0.3050	1.3345	

Precision Analysis & Report

The DL Data Download & Processor Software, makes the field work easier to display the complex leveling tasks.

Specifications

Item		DL-2003A	DL-2007	DL-202
Height Accuracy (standard deviation for 1km double run leveling)	Digital Reading	0.3mm	0.7mm	1.5mm
	Optical Reading	2.0mm		
Distance Accuracy	Digital Reading	D≤10m:10mm;D>10m:D*0.001		
Distance Range	Digital Reading	2m~110m		
Minimum Display	HD	0.01mm/0.1mm/1mm	1mm/0.1mm	0.1mm/1mm
	Distance	0.1/1cm		
Measuring Time		within 3s in normal condition		
Telescope	Magnification	32X		
	Resolving Power	3"		
	Field of View	1°30'		
	Multiple Constant	100		
Compensator	Additive Constant	0		
	Type	magnetic-damped		
	Range	>±12'		
Data Storage (for only DL-201, DL-2007)	Accuracy	0.20"/1'	0.30"/1'	0.50"/1'
	Storage	128MB	16MB, 20,000 points	
	Point Name	increasing/decreasing/customized		
	Connection	RS232/Bluetooth	USB	
External Storage		U disk	SD Card	--
	Circular vial Accuracy	8'/2mm		
Display		3.0 inch LCD Colorful Touch Screen	160*64dpi LCD with illumination	128*32dpi LCD with illumination
Working Temperature		-20°C~50°C		
Dimension		230mmX225mmX203mm	230mmX150mmX210mm	
Weight		3.1kg	2.5kg	
IP Standard		IP65	IP55	

Invar Staff NSI-20M Specification

1	Circle Bubble	≤12'/2mm	
2	Surface curvature distinction	≤4mm	
3	Vertical of central axis and underside	≤5'	
4	Tolerance of zero point	≤0.05mm	
5	Basic barcode graduation tolerance	Deviation	≤0.02mm
		Standard deviation	≤0.013mm
6	Interval tolerance	≤0.04mm	