

SPECIFICATION

| Device type | SPL-1500 | SPL-620 | SPL-370 | SPL-180 |
|--------------------------------|---|-------------------|-----------------|-----------------|
| Type | pulsed precise scan technology | | | |
| Color | Grey | Grey | Grey | White |
| Scanning Range ¹ | 0.5 ~ 1500 m | 0.5 ~ 620 m | 0.5 ~ 370 m | 0.5 ~ 180 m |
| Scanning Accuracy ² | 3 mm @ 100 m | 5 mm @ 100 m | 5 mm @ 100 m | 5 mm @ 100 m |
| Scan Rate | 2,000,000 pts/sec | 1,200,000 pts/sec | 500,000 pts/sec | 500,000 pts/sec |
| Angular Accuracy | 0.001° (H./V.) | | | |
| Scanning FOV | 360° (H.) & 300° (V.) | | | |
| Laser Class | Class1 eye-safe (in accordance with IEC 60825-1:2014) | | | |
| Laser Wavelength | 1550 nm, invisible | | | |
| Laser Beam Divergence | 0.3 mrad (1/e) | | | |
| Interface | USB 3.0, external power supply, Ethernet | | | |
| Data Storage | USB 3.2 flash drive 256 GB (as default) | | | |
| Imaging Resolution | inbuilt (24.6 MP in total, 2 x 12.3 MP) | | | |
| Scanning Control | on-board 5-inch HDR (720x1280) color touch display or web interface remote control on tablet/smartphone | | | |
| Dual-axis Compensator | compensating range±15°;compensating accuracy 0.008° | | | |
| Sensor | integrated, height relative (to a fixed point) to detect | | | |
| | on board | | | |
| | integrated, orientation to detect | | | |
| | integrated tracking | | | |
| Power Supply | rechargeable battery (as default); external supply by 19V DC | | | |
| Power Consumption | 25 W (while scanning) | | | |
| Battery Endurance | max. 4 h per unit (one unit needed for operation only) | | | |
| Operating Temperature | -20°C ~ +60°C | | | |
| Storage Temperature | -35°C ~ +70°C | | | |
| Humidity Resistance | non-condensing | | | |
| Ingress Protection | IP64 | IP54 | IP54 | IP54 |
| Net Weight | 6 kg (without battery); 6.45 kg (with battery) | | | |
| Dimension | 247x107x202mm | | | |

*1. The measured distance is the test conclusion of the laboratory under 80% reflectivity and is for reference only.
*2. The measured accuracy is the test conclusion of the laboratory under 80% reflectivity and is for reference only.

CONFIGURATION

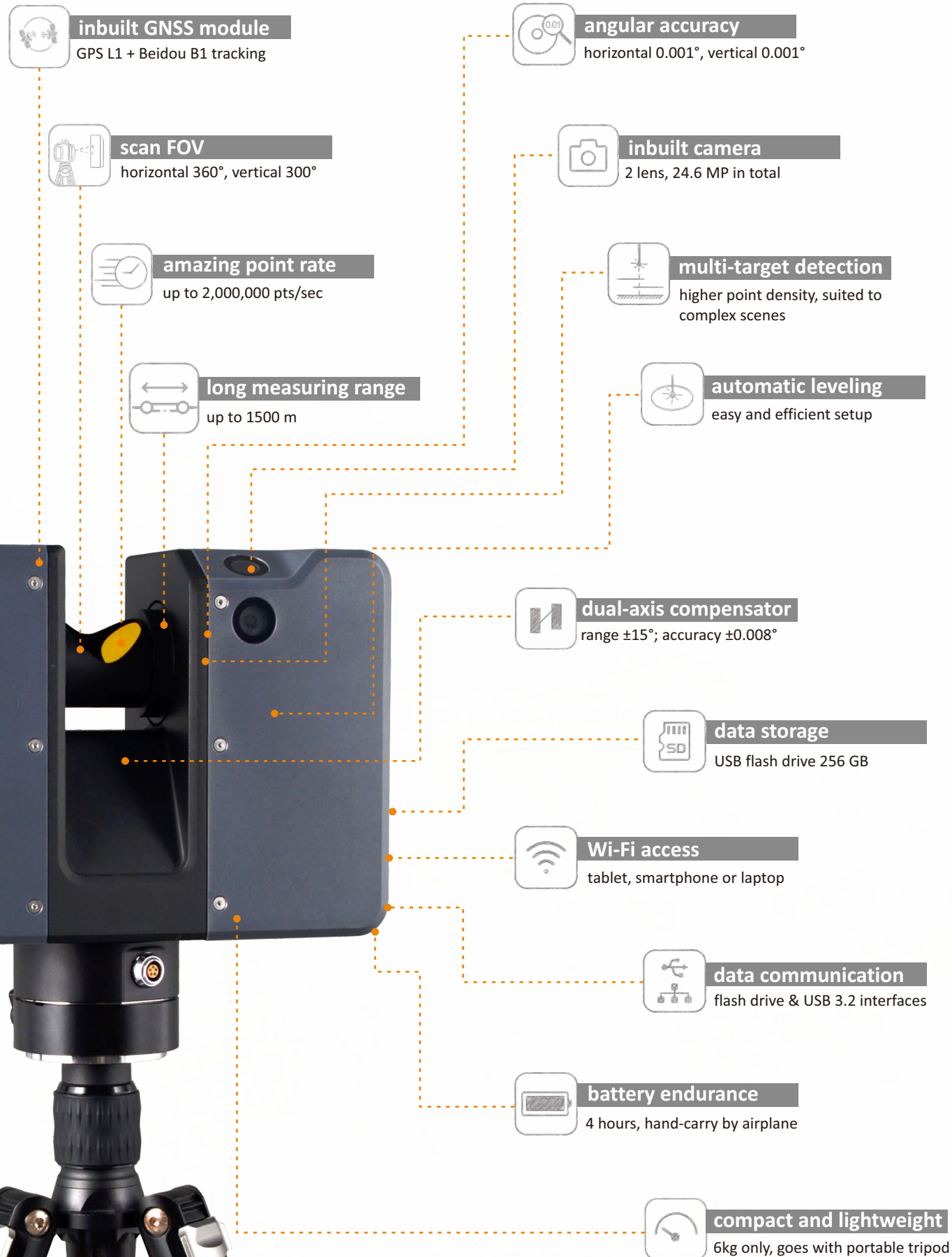
| No. | Item | Description | Quantity |
|------------------------|-----------------------|--|----------|
| standard configuration | | | |
| ① | 3D Laser Scanner Unit | model: SPL-500 | 1 |
| ② | Lens Protective Cover | | 1 |
| ③ | USB Flash Drive | USB 3.1, 256 GB | 1 |
| ④ | Rechargeable Battery | 28.8 V, 3400 mAh, 97.92 Wh | 2 |
| ⑤ | Battery Charger | | 1 |
| ⑥ | Charger Adapter | | 1 |
| ⑦ | Carrying Case | | 1 |
| ⑧ | Lightweight Tripod | packed with a soft bag | 1 |
| ⑨ | Software Dongle Key | for post-processing AcuteLas Studio | 1 |
| optional accessories | | | |
| ⑩ | scanner sphere | 6 nos. as one set, packed in a separate case ready to place in front and behind both | 6 |
| ⑪ | Backpack | | 1 |
| ⑫ | RTK Connector | | 1 |



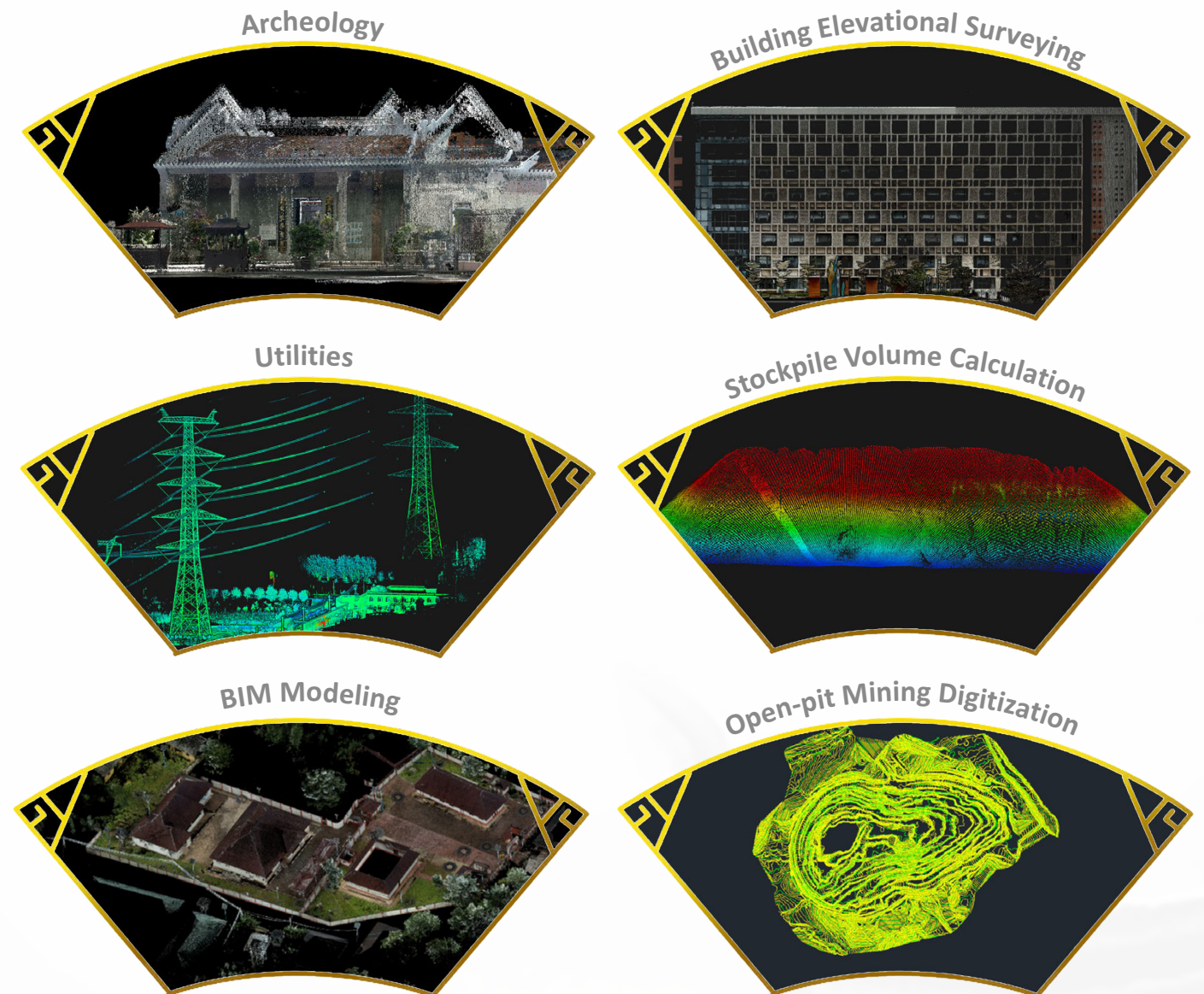
AcuteLas Series
SPL-1500/SPL-620/SPL-370/SPL-180
Pulse. Portable. Accurate. Efficient



FEATURES



APPLICATIONS



SOFTWARE

SYSTEM REQUIREMENTS

| | |
|------------------|--|
| Operating System | Windows 10 IoT Enterprise or higher |
| Processor | Intel® 13th Gen Core™ i7 processor or better |
| RAM | 32 GB or better |
| Storage | SSD 1 TB or better |



- © Data integration: Import&Export formats to support SOUTH and other formats (XYZ, E57, PCD, LAS, PLY, etc.)
- © Automatic and manual registration, refinement, and reporting
- © Geo-referencing: convert to local coordinate system by importing survey control files
- © Automatic and manual classification
- © Data interaction (2D, 3D and setup view)
- © 3D calculation (distance, area, and volume)