

Hysword SS500

- Side Scan Sonar -

Eyes and ears of
the underwater world



PRODUCT BRIEF PRODUCTION

Hysword SS500 side scan sonar is a type of portable sonar used to obtain high-resolution underwater images. It has the design concept of lightweight and convenient, with the advantages of easy to use and low power consumption, which can greatly improves the work efficiency.

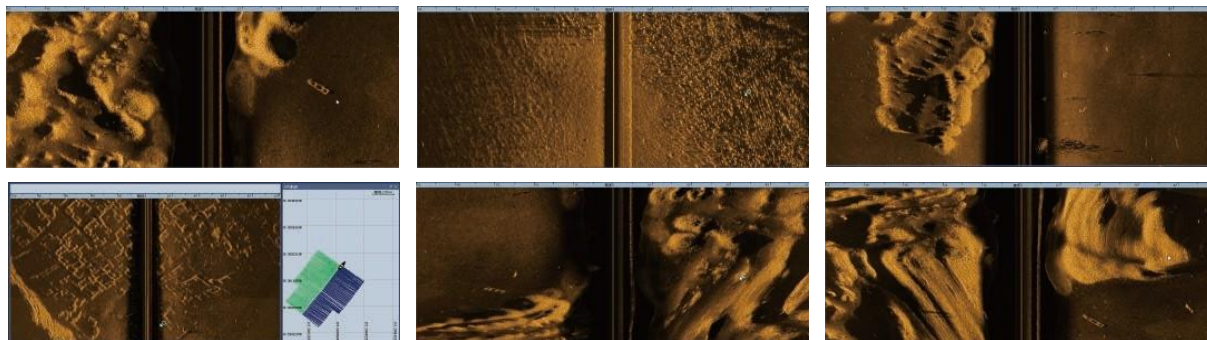
The towfish part is fully integrated the design concept of hydrodynamic structure, with excellent towing equilibrium. Portable design, which can be easily complete the survey work by a single person.

Matched navigation software integrated navigation, data acquisition, imaging and other multiple functions all in one, it can perform real time data acquisition and visual display. It supports sea map display, survey line layout, path planning, target marking, equal-proportion sonar mapping and other functions. In addition, it supports the transfer of the standard XTF format data to meet the needs of image merge, which fully meets the demands for timely acquisition of underwater data.

CHARACTERISTICS

- Built-in attitude, course and temperature sensors
- High-resolution with wide-range of side scan
- Ultra wide-range coverage, up to 14times water depth
- High-precision Chirp image technology, system with strong anti-interference ability
- With open data interface, it is compatible with commonly used third software in the market
- Friendly man-machine interaction, easy to use
- Lightweight and convenient, easy to transport, high efficient and low power consumption

DETECTIVE ACHIEVEMENT EXHIBITION



SPECIFICATIONS

Hardware and software image balancing	Support
Water imaging	Support
4K High definition display	Support
Data port	100M Ethernet
Navigation display software	Standard
Output data Format	GDSS(XTF)
Work frequency	500kHz
Signal type	Chirp/CW
Signal bandwidth	100kHz
Max range (single side)	150m
Horizontal Beam angle	0.4°
Vertical Beam angle	50°
Vertical track resolution	0.75cm
Transducer Fixed angle	15°
Standard accessories	Security electrical cable
	Air transport box, towfish
	Navigation data acquisition software
Optional accessories	Display & Control terminal
	Measuring rod mounting bracket for
	Satellite positioning equipment
Wet end size	660mm * 110mm (length * Diameter)
Wet end weight	6.6kg
Work mode	Fixed installation
Power supply	220 AC / 24 VDC
Power consumption(Max)	37W