

● **AcuteLas Studio Software**

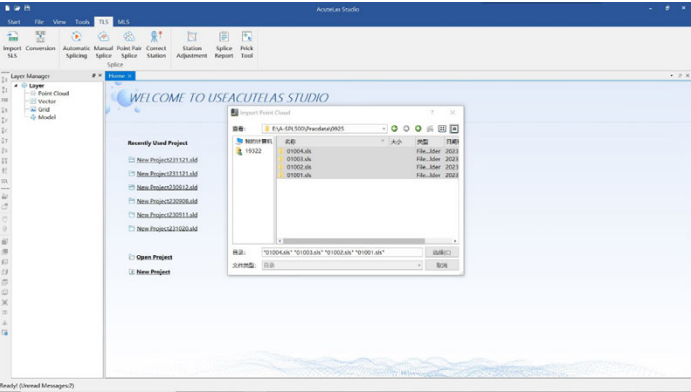
AcuteLas Studio software is designed to process AcuteLas series aerial LiDAR system data and 3D laser scanner data, including the functions one-key trajectory processing and laser scanner/LiDAR data processing and fusion, point cloud data quality check, quality report output, coordinate system conversion, point cloud classification, topographic survey module, etc.



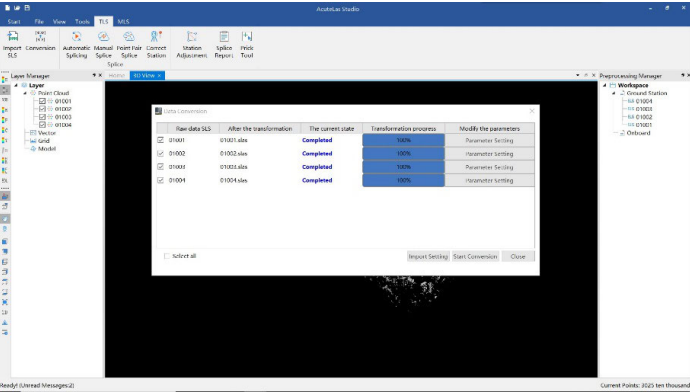
● **One Key Processing**

AcuteLas studio is capable to process terrestrial scanner data, aerial lidar data, and it can process data in batches, that means several groups data can be imported at the same time and process together.

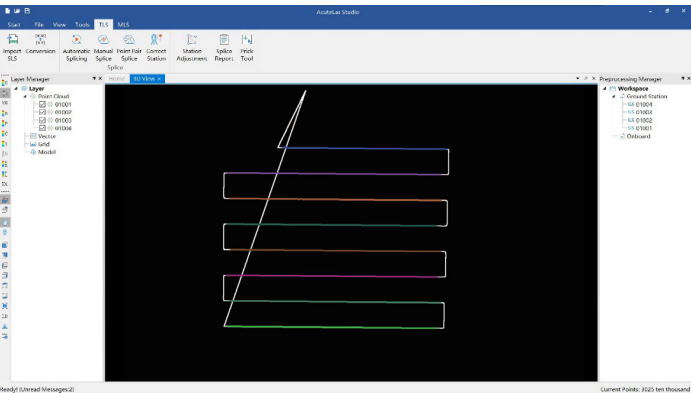
1- import several flights data



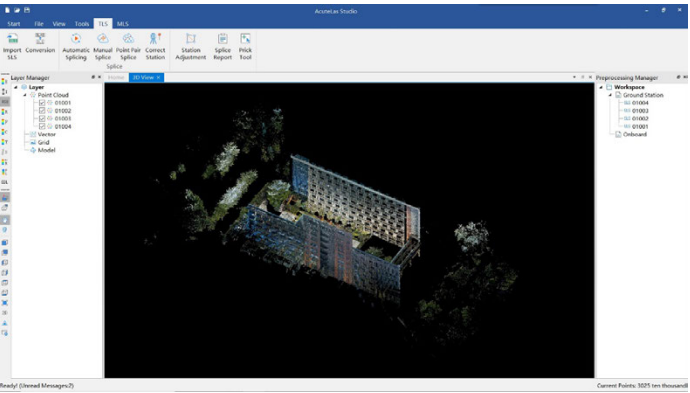
2- several flights POS data processing



3- flight strips division

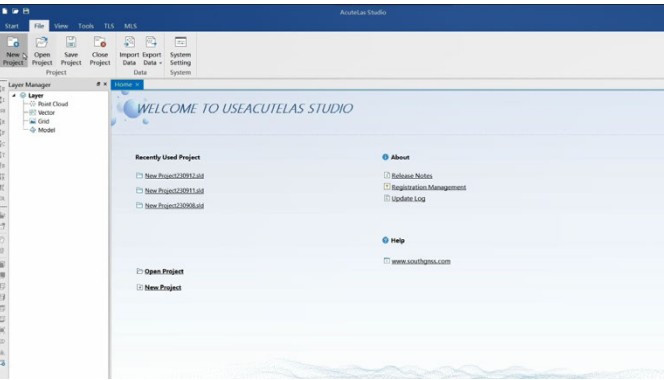


4- serval flight data fusion



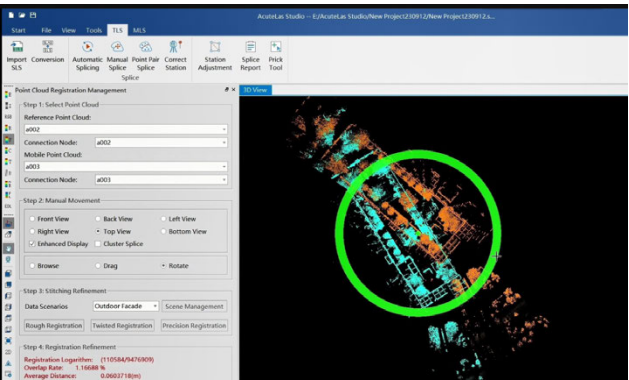
Data Pre-process

Support to process TLS data /MMS data.



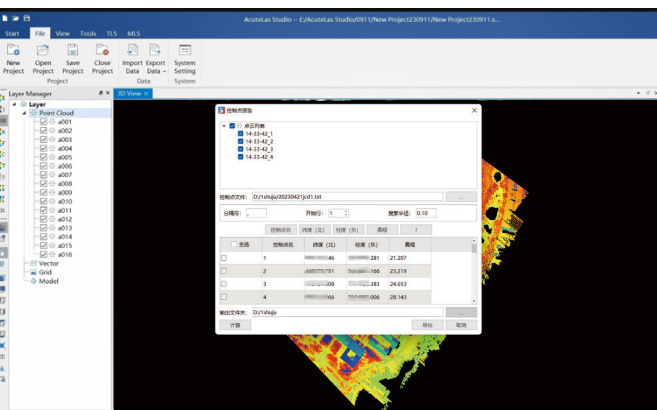
Automatically and manually Global Registration

Support to precisely register TLS data and MMS data manually or automatically.



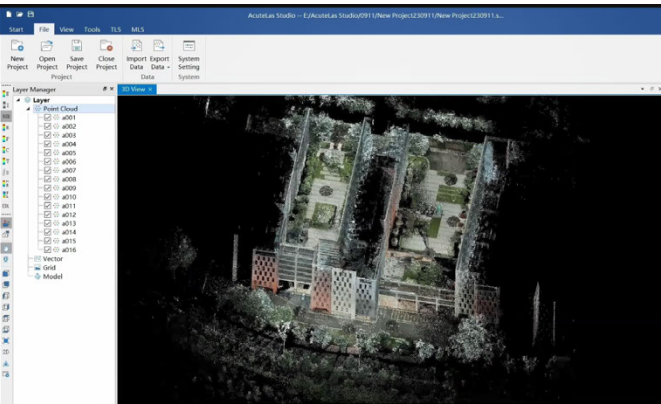
Point cloud quality verification report

Support to verify the point cloud accuracy, output verification report.



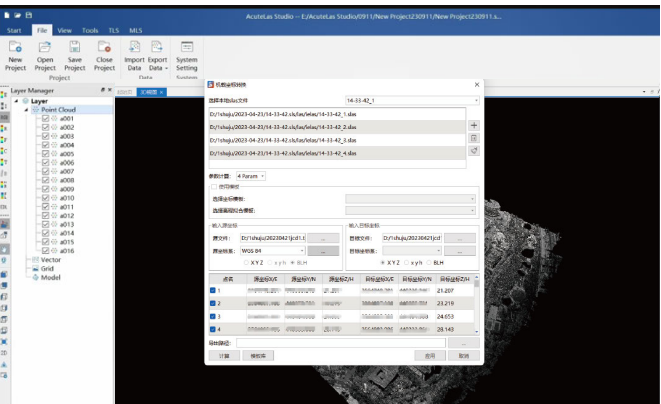
Point cloud generation

Support to render the point cloud by elevation, color, intensity, class, time, etc. and display the point cloud in section view.



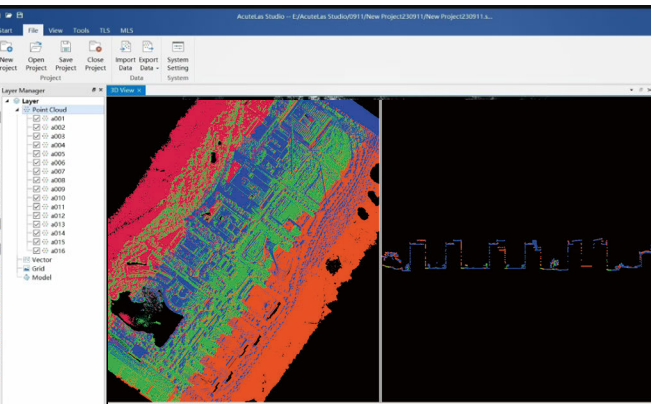
Coordinate system transformation

Support to convert coordinates with different methods.



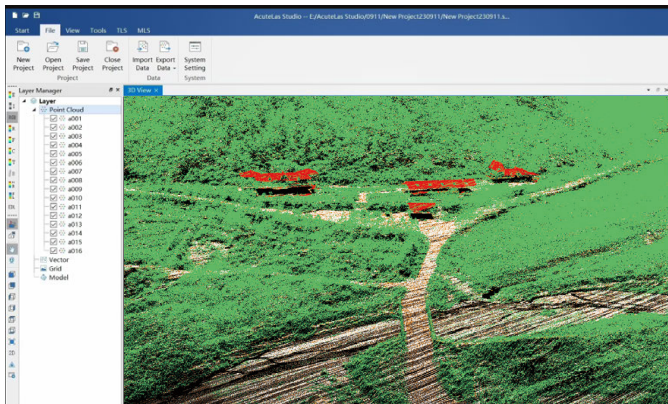
Point cloud correction

Support to adjust the trajectory and point cloud.



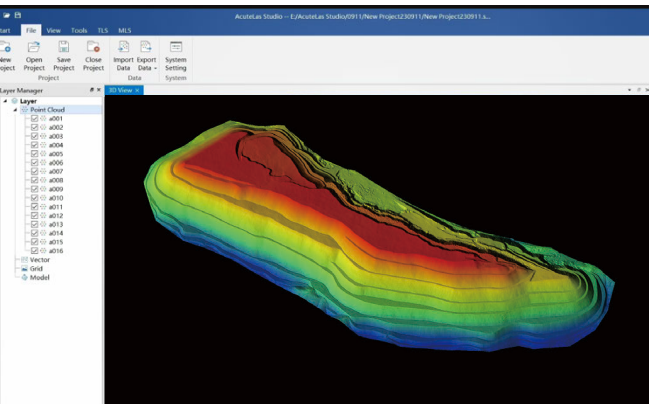
Point cloud classification

Support to classify point cloud manually or automatically.

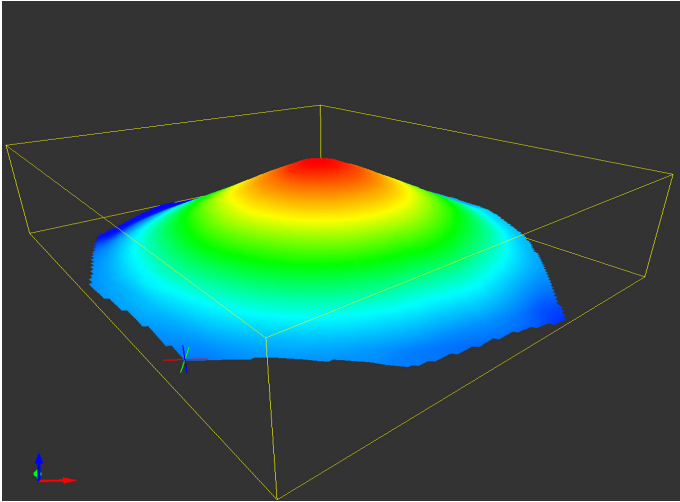


Topographic surveying module

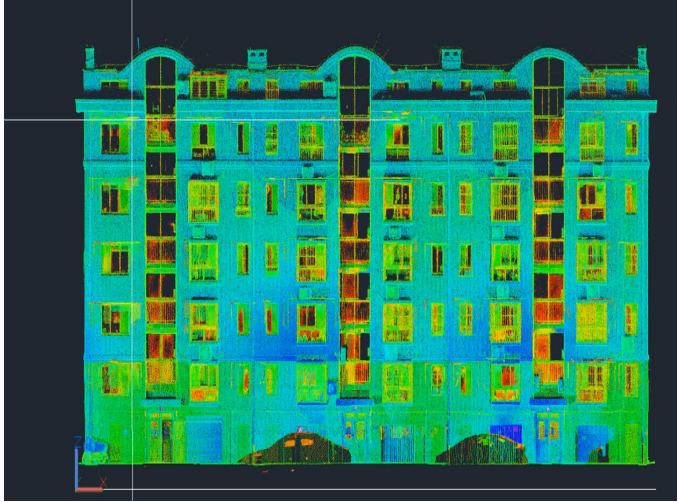
Support to generate DEM/DSM, one key to extract contours or elevation points.



Mesh generation



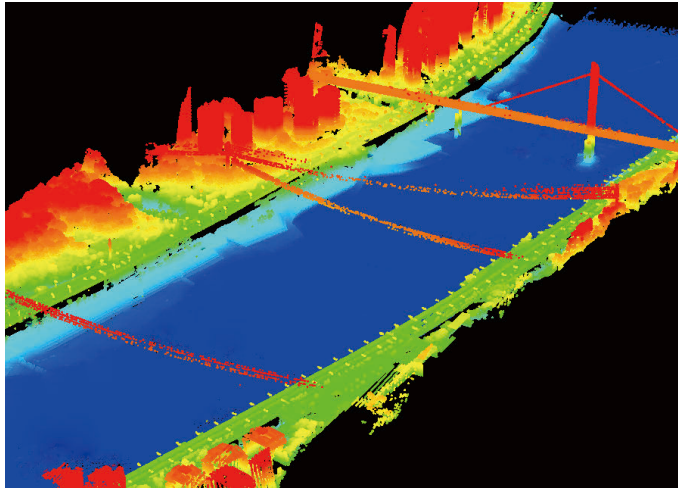
Export to CAD



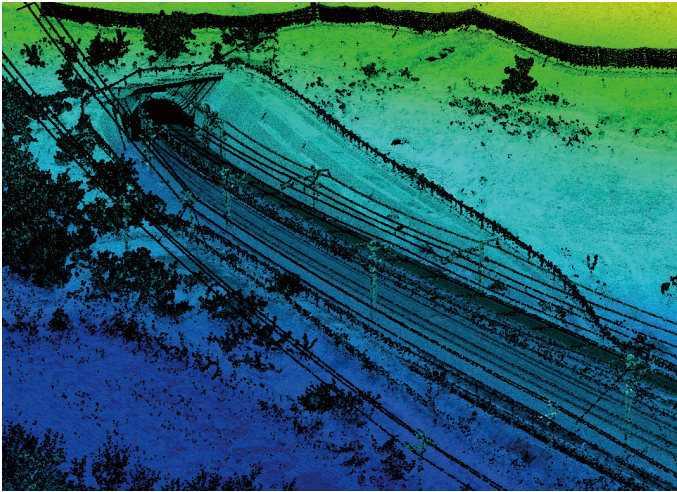
● Applications



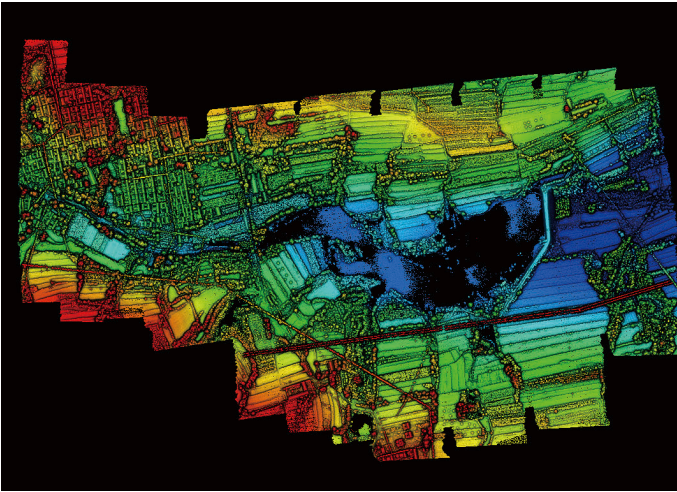
city planning



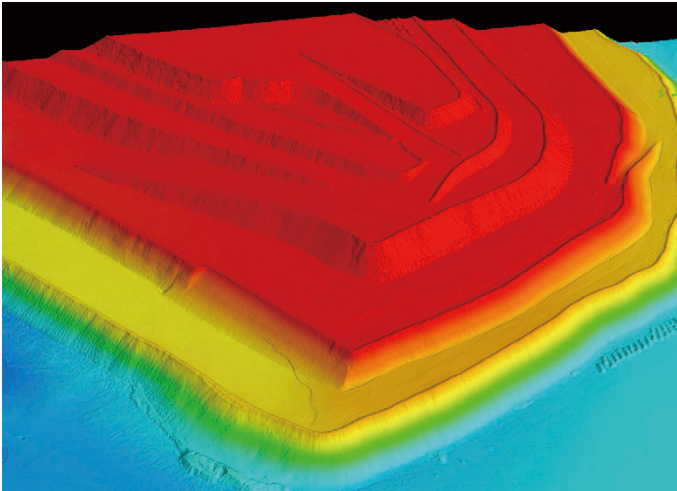
river surveying



railway inspection



topographic surveying



mine surveying



digital tourism