

Application Scenario



Supports USV
Surveying



Shallow Water
Depth Survey



Pond, River
and Estuary
Surveys



Harbor and
Coastline
Surveys

Technical Specifications

Sonar Parameters

Model	T400S
Frequency	400kHz
Swath Coverage	Up to 150°
Beam Width	2°(TX) *1°(RX)
Number of Soundings	512 soundings
Depth Range	0.2-200m
Depth Resolution	0.75cm
Beam Patterns	Equidistant and Equidistant
Ping Rate	Up to 60 Hz
Signal Form	CW/FM
Pulse Width	30μs - 8ms
Depth Rating (Sonar Head)	50m
Roll Stabilization	±15°
Sound Velocity Sensor Range	1350m/s-1750m/s
Side Scan	Support
Real-time Roll Stability	Support
Heading Accuracy(GNSS)	0.1° (2m baseline)
Roll/Pitch Accuracy	0.1°
Horizontal Accuracy	2cm+1ppm(RTK) 0.6m(SBAS)
Heave Accuracy	5cm/5%

Electric Parameters

Input voltage	DC 12-48V/AC 110-240V
Power	60W(type)/80(max)
Output Interface	LAN Port*1
Cable Length	15m(Customized)

Physical Properties

Receiver and Projector Size	Dia 220 x H 139mm
Projector / Receiver	5.6Kg
Operation Temperature	-10°C~40°C
Storage Temperature	-20°C~55°C
Built-in: Unit, IMU, Satellite Positioning,SVS	

Software

SOUTHsweep
Hydrexplorer



T400S MULTIBEAM SONAR SYSTEM



SOUTH
Target your success

Product Introduction

The revolutionary T400S focuses on intelligent, integrated and high precision of multibeam echosounder system. Its ultra-compact design can be easily operated by one person and suitable for USV, ROV, AUV platforms.

The number of 512 beams can provide you with high precision measurement result. Because of IMU built-in receiver, this system does not need calibration. With low power consumption, it is also suitable to operate from battery.

T400S, small, lightweight and cost-effective could be your best choice.

Product Features

- ※ System Weight < 10Kg
- ※ FM & CW Processing
- ※ Flexible Power Source (DC12-48 V, AC110-240 V)
- ※ Simple Interface
- ※ Roll-stabilization
- ※ Efficient and portable

Applications

- ※ Bathymetry
- ※ Pipeline Surveys
- ※ River, Estuary, Channel and Pond Surveys
- ※ Harbor and Coastline Surveys
- ※ USV, ROV & AUV Integrated
- ※ Geological Survey
- ※ Search and Rescue



Small Size Sonar
Receiver and projector
Dia 220x139(mm)



Portable
Receiver and projector
5.6kg

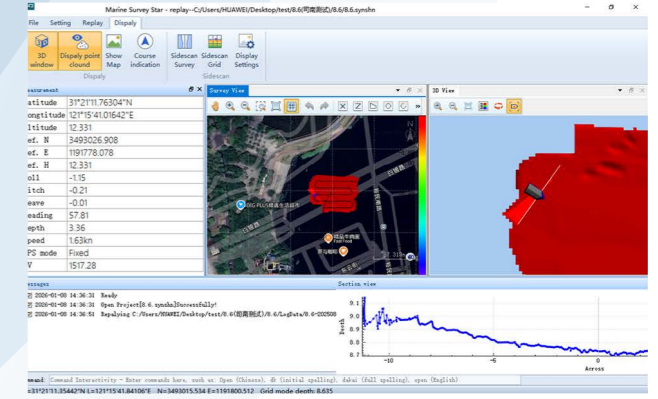
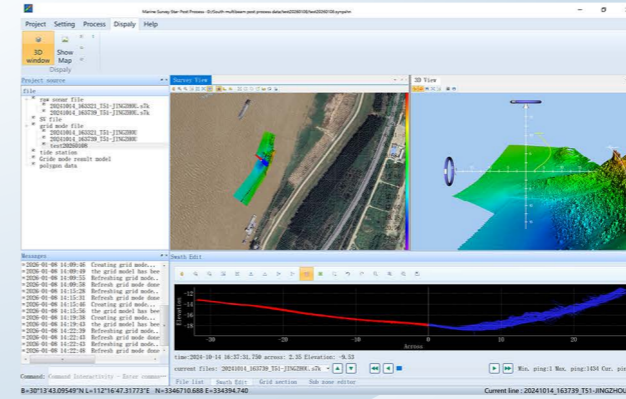


Multiple Application
Bottom track, side scan and
water column

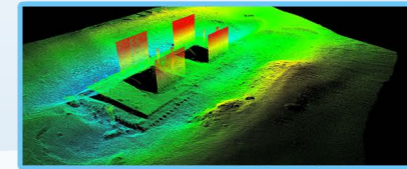


High Accuracy
Maximum 512 sounding
7.5mm depth resolution

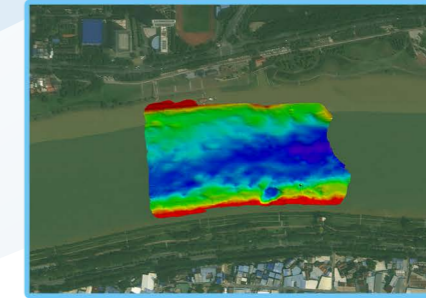
Software Sample



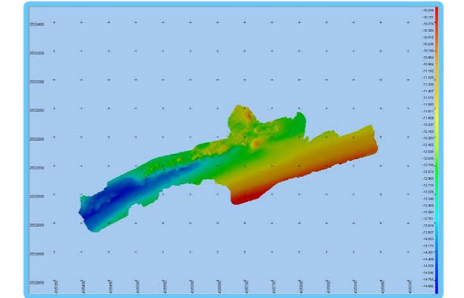
Application Areas



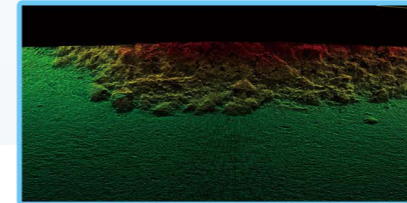
Bridge Pier Scour Survey



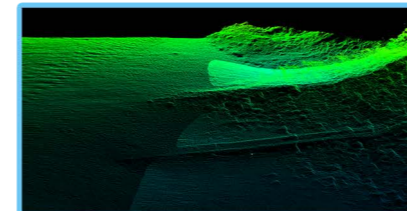
Underwater Topography Survey



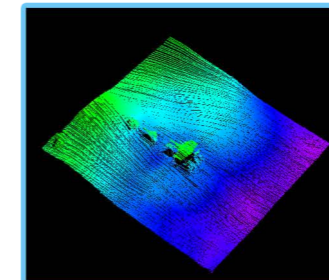
Inland Waterway Survey



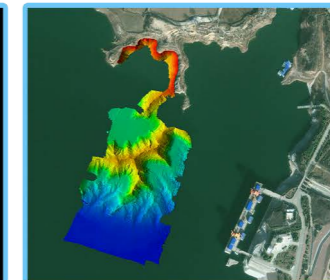
Coastal Waters Survey



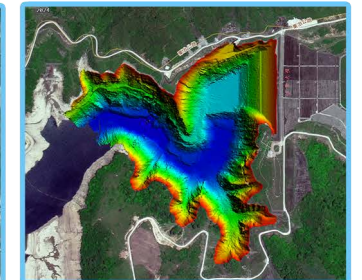
Underwater Route Survey



Underwater Obstacle Survey



Dredging Navigation Survey



Reservoir Capacity Survey